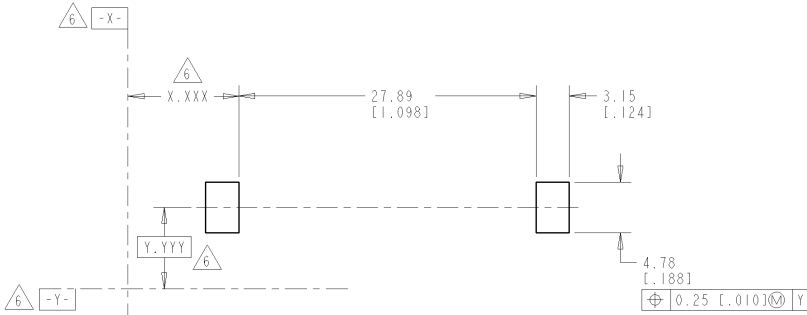
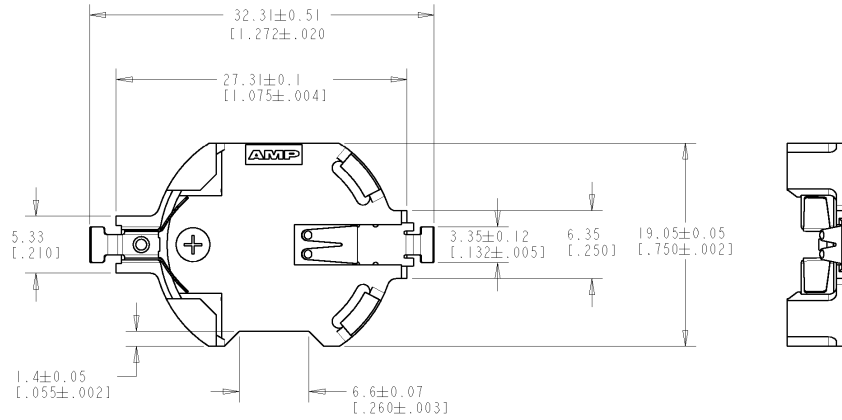
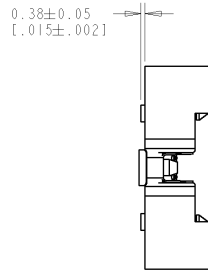


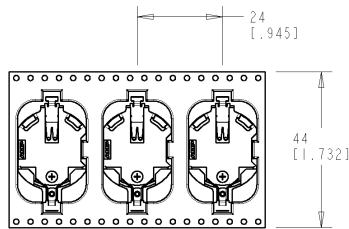
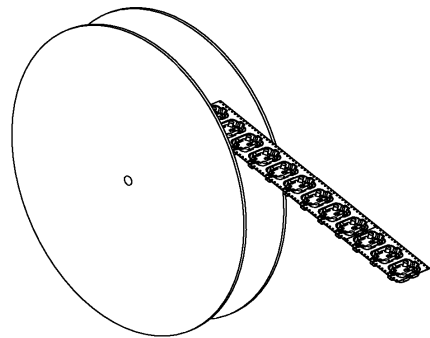
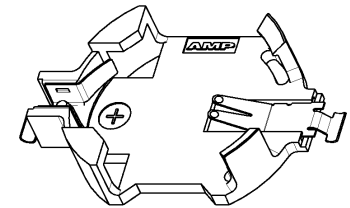
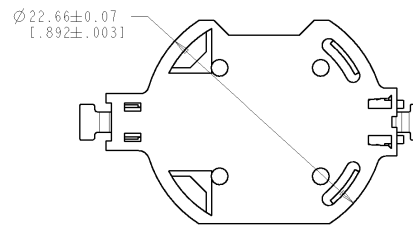
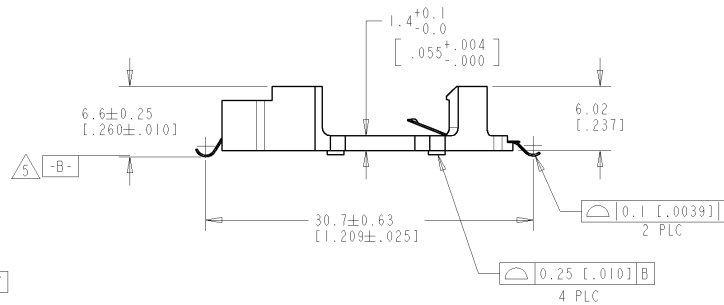
THIS DRAWING IS UNPUBLISHED. RELEASED FOR PUBLICATION
 BY TYCO ELECTRONICS CORPORATION. ALL RIGHTS RESERVED.

LOC	DIST	P	LTN	DESCRIPTION	DATE	BY	APPD
AD	00			REVISED PER ECO-05-000377	21MAR05	LZ	I.E

- 1 HOUSING: HIGH TEMPERATURE 94V-0 RATED LCP
COLOR NATURAL.
- 2 CONTACTS: PHOSPHOR BRONZE.
- 3 CONTACTS: 0.0200-0.0004(.000080-.000157) TIN.
- 3. CONNECTOR ACCEPTS BATTERY CR2032.
- 4. PACKAGING: TAPE AND REEL.
TAPE & SPROCKET HOLES DIMENSIONS
PER EIA-481-3 WITH 330.0 (.13.0) DIA. CARDBOARD SIDES
- 5 DATUM [-B-] IS ESTABLISHED BY ANY CONTACT OR
HOUSING SURFACES CONTACTING A REFERENCE PLANE.
- 6 DATUMS AND DIMENSIONS ESTABLISHED BY CUSTOMER.



RECOMMENDED PC BOARD LAYOUT



→
DIRECTION OF FEED
OFF TOP OF REEL

796136-1
PART NUMBER

THIS DRAWING IS A CONTROLLED DOCUMENT FOR TYCO ELECTRONICS CORPORATION IT IS SUBJECT TO CHANGE AND TO CORRECTION. UNLESS OTHERWISE INDICATED, IT SHOULD BE CONTACTED FOR THE LATEST REVISION.		DWN J. GERACE 13AUG99 CHR K. BENJAMIN 13AUG99 APVD K. BENJAMIN 13AUG99	tyco Electronics Tyco Electronics Corporation SH/CN Guilford RD 068#	NAME ASSEMBLY BATTERY CONNECTOR, SURFACE MOUNT, TOP LOAD	RESTRICTED TO -
DIMENSIONS: mm [INCHES]	TOLERANCES UNLESS OTHERWISE SPECIFIED: 0 PLC ±.05 [.02] 1 PLC ±.01 [.005] 2 PLC ±.013 [.005] 3 PLC ±.050 [.0020] 4 PLC ±.05 ANGLES ±.5	PRODUCT SPEC - APPLICATION SPEC - WEIGHT -	SIZE A2	CAGE CODE 00779	DRAWING NO C-796136
MATERIAL 1	FINISH 2	CUSTOMER DRAWING	SCALE 3:1	SHEET 1	OF 1